

Mac CPCL Driver installation

1.1. Installation.

1. Extract this archive creating the sewoolabel_bin directory automatically.

```
# tar -zxvf sewoolabel_bin.tar.gz [Enter]
```

2. Open your favorite shell (bash, etc.) and move to the sewoolabel_bin directory.

```
# cd sewoolabel_bin [Enter]
```

3. Execute the 'su' command to obtain super-user level permissions.

You must enter the root user's password for this to succeed. Be careful!.

4. Type 'sudo sh setup.sh' to install this package onto your computer.

```
# sudo sh setup.sh [Enter]
```

A successfull install should result in output similar to this:

SEWOO TECH

SEWOO TECH CPCL CUPS DRIVER Mac OS Installer

Models included:

LK-P11

LK-P12

LK-P30

LK-P41

LK-P43

LK-P4xx

Searching for ServerRoot, ServerBin, and DataDir tags in /etc/cups/cupsd.conf

ServerBin tag not present in cupsd.conf - using default

DataDir tag not present in cupsd.conf - using default

ServerRoot =

ServerBin =

DataDir =

Copying rasterlkp11 filter to /usr/libexec/cups/filter

Copying rasterlbp12 filter to/usr/libexec/cups/filter

Copying rasterlbp30 filter to/usr/libexec/cups/filter

Copying rasterlbp41 filter to/usr/libexec/cups/filter

Copying rasterlbp43 filter to/usr/libexec/cups/filter

Copying rasterlbp4xx filter to/usr/libexec/cups/filter

Copying model ppd files to //usr/share/cups/model/SEWOO

Restarting CUPS

Install Complete

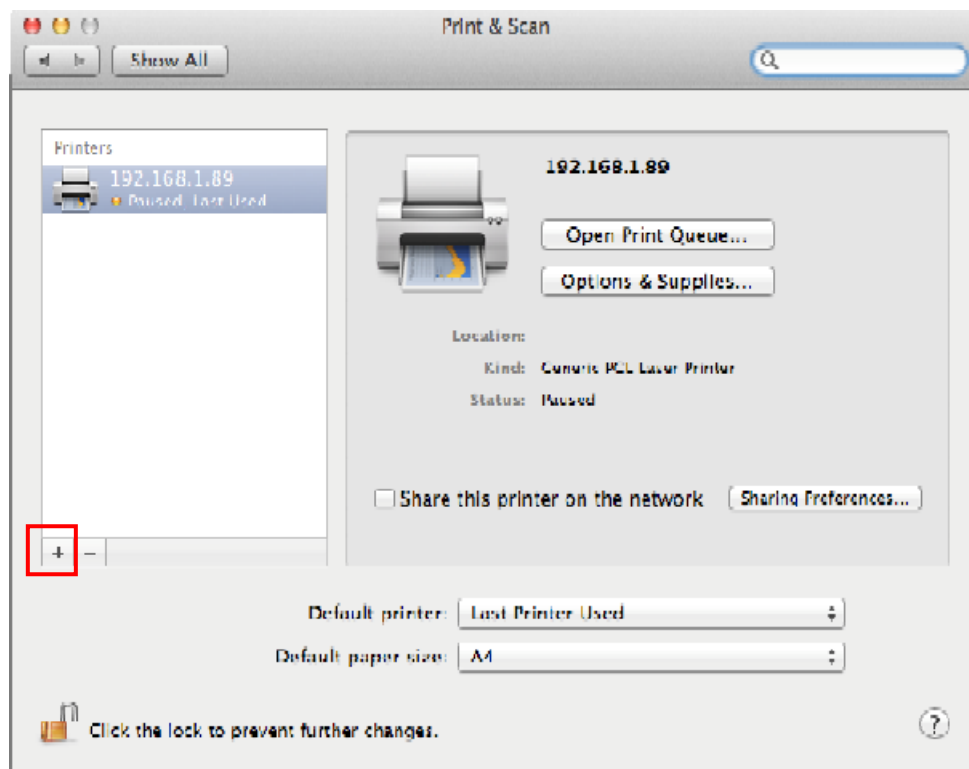
Add printer queue using Printing Manager, or

Add printer queue using OS tool, <http://localhost:631>, or <http://127.0.0.1:631>

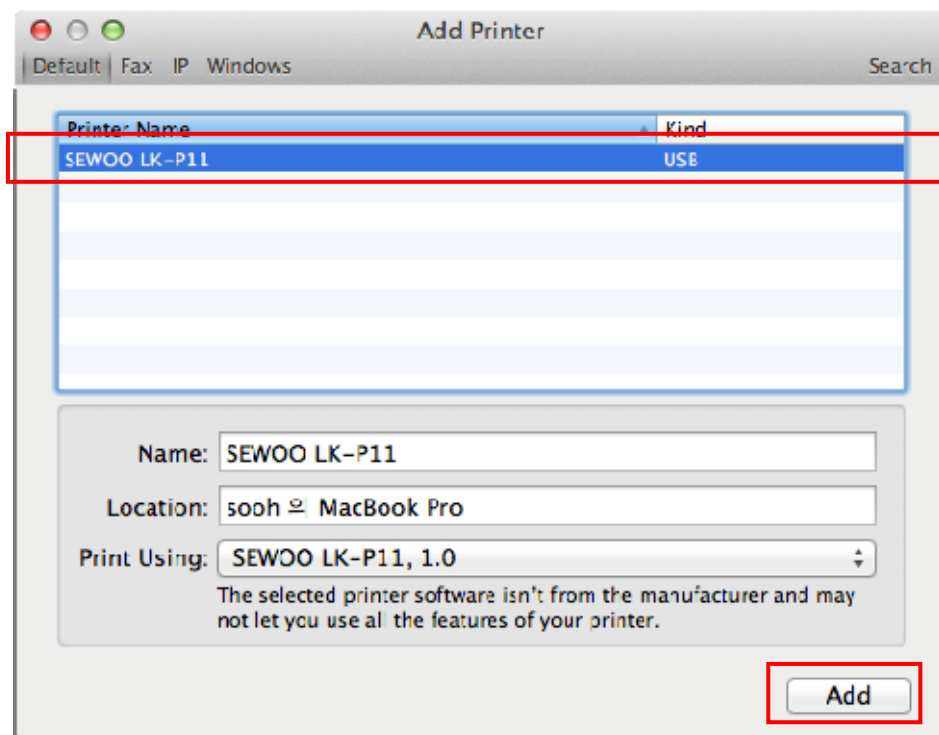
1.2. How to Add Printer (Example : SEWOO LK-P11)

System Preferences ➔ Print & Scan or <http://127.0.0.1:631>

- 1.2.1. On the Apple menu, click System Preferences and click Print & Scan.
- 1.2.2. Connect the printer to desktop and turn on the printer.
- 1.2.3. Click the “+” button to add printer.



1.2.4. Select “SEWOO LK-P11” and click “Add” button.



1.2.5. Complete.

